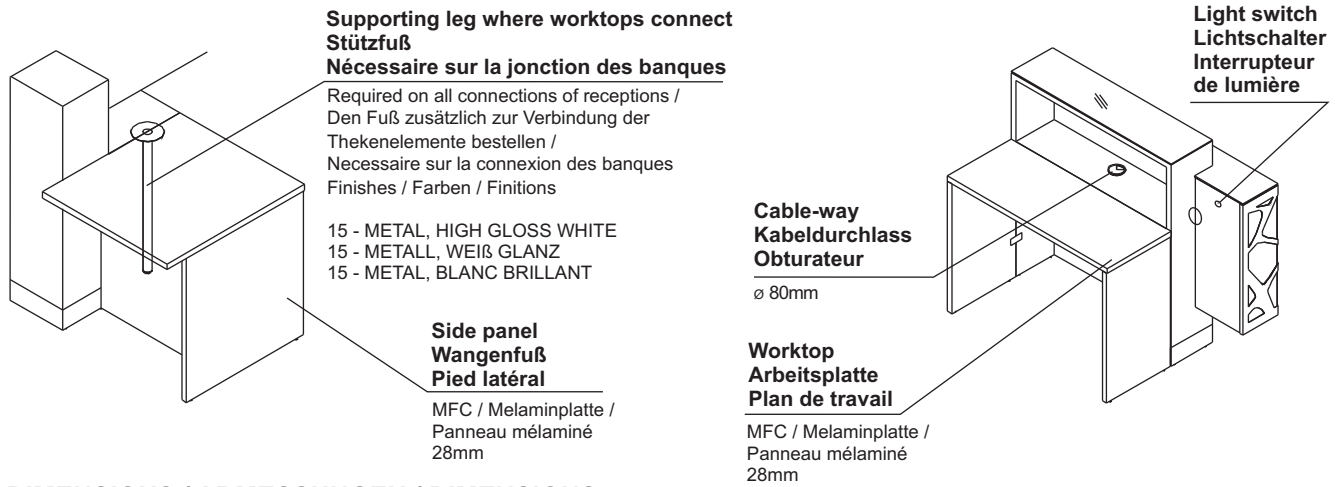
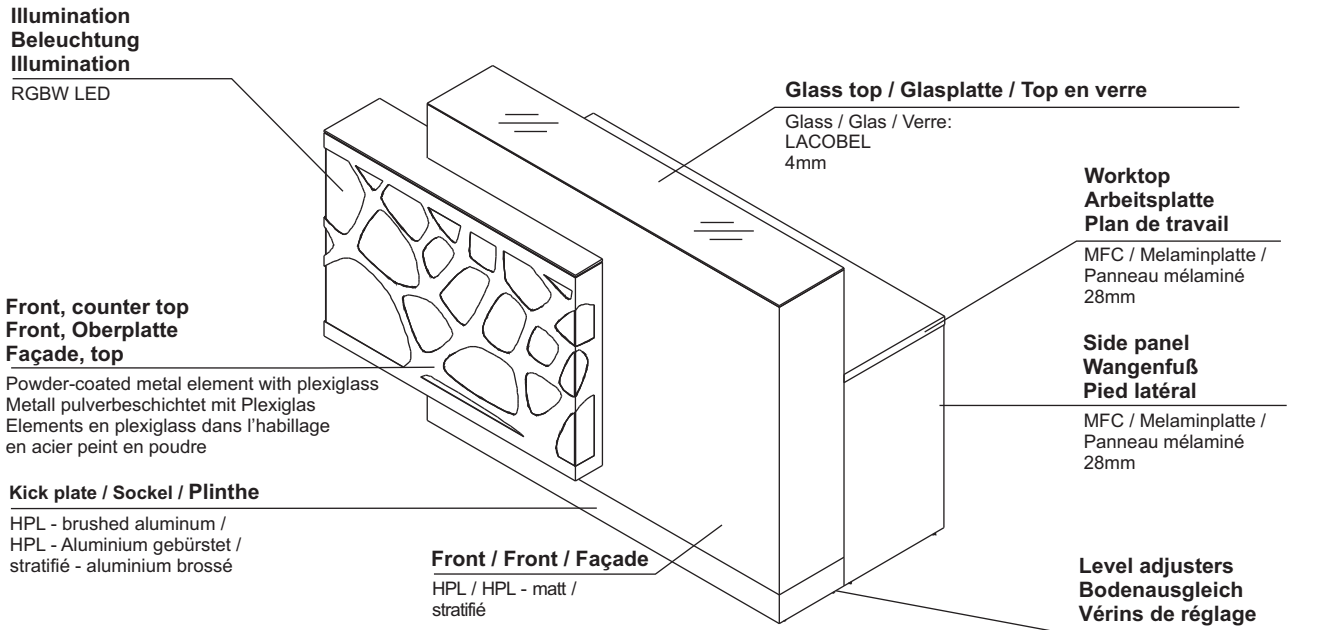
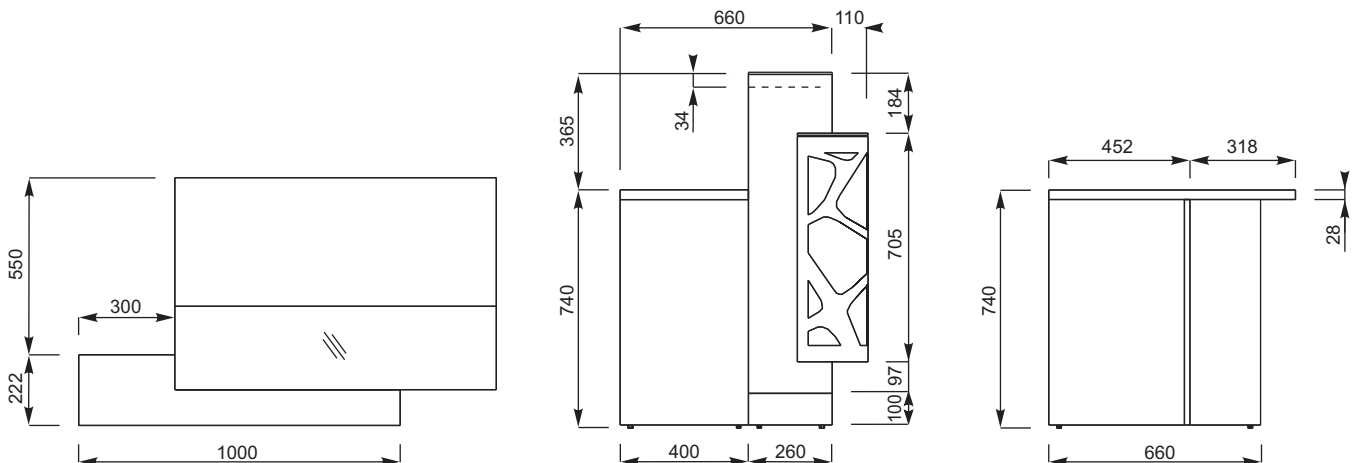


**TECHNICAL SPECIFICATION / TECHNISCHE BESCHREIBUNG / DESCRIPTION TECHNIQUE**

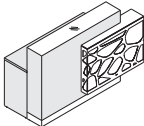
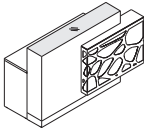
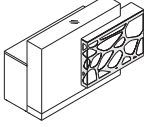


**DIMENSIONS / ABMESSUNGEN / DIMENSIONS**

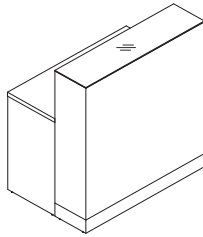




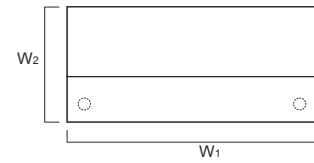
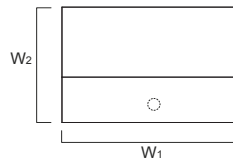
FINISHES / FARBEN / FINITIONS

<p>67 WHITE PASTEL WEIß PASTELL BLANC PASTEL</p>	
<p>GLASS LACOBEL, WHITE GLAS LACOBEL, WEIß VERRE LAQUE LACOBEL, BLANC</p>	
<p>15 METAL, HIGH GLOSS WHITE METALL, WEIß GLANZ METAL, BLANC BRILLANT</p>	

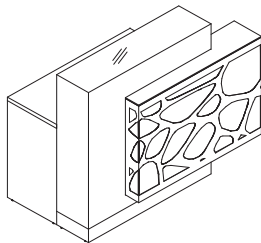
**RECEPTION DESK SYSTEMS / EMPFANGSTHEKEN-SYSTEME / CONFIGURATIONS DES BANQUES**



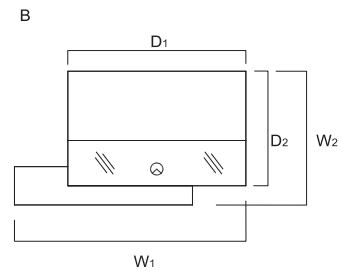
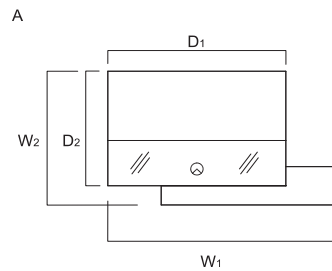
LOG10K+LOG14B



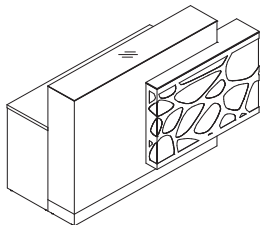
INDEX SYMBOL	DIMENSIONS / ABMESSUNGEN [mm]					GBP	kg	m3	pcs	COMMENTS / BEMERKUNGEN / REMARQUES
	W <sub>1</sub>	W <sub>2</sub>	D <sub>1</sub>	D <sub>2</sub>	H					
<b>LOG10G</b>	1000	660	-	-	1105	782,-	50.0	0.582	2	
<b>LOG14G</b>	1400	660	-	-	1105	1 097,-	55.0	0.815	2	



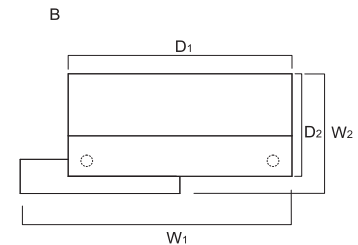
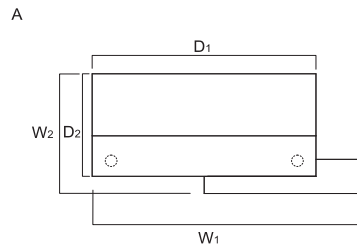
A: LOG10K+LOG10B+LOG01L  
B: LOG10K+LOG10B+LOG01P



INDEX SYMBOL		DIMENSIONS / ABMESSUNGEN [mm]					GBP	kg	m3	pcs	COMMENTS / BEMERKUNGEN / REMARQUES
A	B	W <sub>1</sub>	W <sub>2</sub>	D <sub>1</sub>	D <sub>2</sub>	H					
<b>LOG11LG</b>	<b>LOG11PG</b>	1300	770	1000	660	1105	2 015,-	59.5	0.745	6	



A: LOG14K+LOG14B+LOG01L  
B: LOG14K+LOG14B+LOG01P



INDEX SYMBOL		DIMENSIONS / ABMESSUNGEN [mm]					GBP	kg	m3	pcs	COMMENTS / BEMERKUNGEN / REMARQUES
A	B	W <sub>1</sub>	W <sub>2</sub>	D <sub>1</sub>	D <sub>2</sub>	H					
<b>LOG12LG</b>	<b>LOG12PG</b>	1700	770	1400	660	1105	2 329,-	64.5	0.978	6	

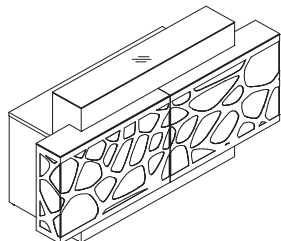
DESCRIPTION / LEGENDE / LÉGENDE:

net weight / Nettogewicht / poids net

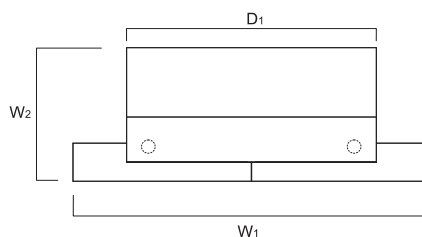
volume / Volumen / le volume

number of packages / Stückzahl der Pakete / nombre de colis

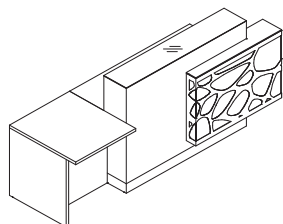
**RECEPTION DESK SYSTEMS / EMPFANGSTHEKEN-SYSTEME / CONFIGURATIONS DES BANQUES**



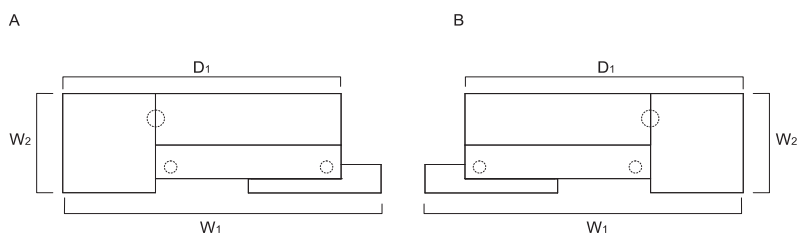
LOG14K+LOG14B+LOG01L+LOG01P



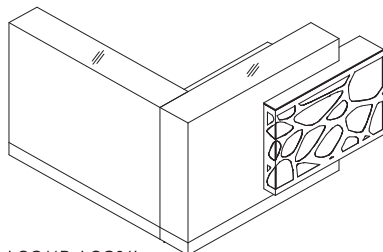
INDEX SYMBOL	DIMENSIONS / ABMESSUNGEN [mm]					GBP	⚖️	📦	📦		COMMENTS / BEMERKUNGEN / REMARQUES
	W <sub>1</sub>	W <sub>2</sub>	D <sub>1</sub>	D <sub>2</sub>	H						
<b>LOG13G</b>	2000	770	1400	-	1105	3 562,-	74.0	1.141	10		



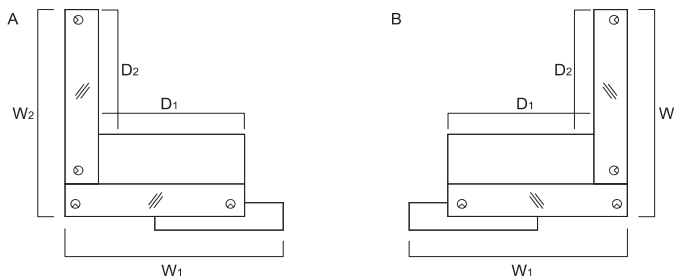
A: LOG07+NE41+LOG14K+LOG14B+LOG01L  
B: LOG01P+LOG14K+LOG14B+NE41+LOG07



INDEX SYMBOL		DIMENSIONS / ABMESSUNGEN [mm]					GBP	⚖️	📦	📦		COMMENTS / BEMERKUNGEN / REMARQUES
A	B	W <sub>1</sub>	W <sub>2</sub>	D <sub>1</sub>	D <sub>2</sub>	H						
<b>LOG14PLG</b>	<b>LOG14PPG</b>	2400	770	2100	-	1105	2 829,-	77.8	1.027	8		



A: 2xLOG14K+LOG11B+LOG01L  
B: LOG01P+2xLOG14K+LOG11B



INDEX SYMBOL		DIMENSIONS / ABMESSUNGEN [mm]					GBP	⚖️	📦	📦		COMMENTS / BEMERKUNGEN / REMARQUES
A	B	W <sub>1</sub>	W <sub>2</sub>	D <sub>1</sub>	D <sub>2</sub>	H						
<b>LOG16LG</b>	<b>LOG16PG</b>	1700	1660	1140	1000	1105	3 120,-	104.5	1.301	7		

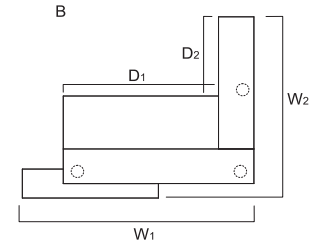
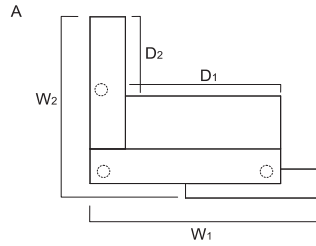
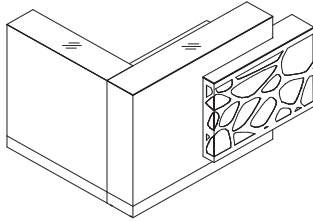
DESCRIPTION / LEGENDE / LÉGENDE:

⚖️ net weight / Nettogewicht / poids net

📦 volume / Volumen / le volume

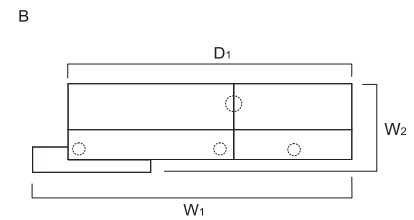
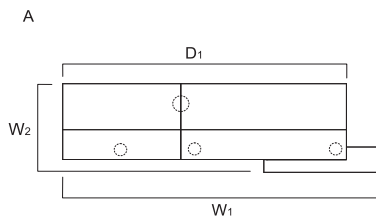
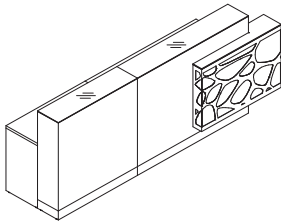
📦 number of packages / Stückzahl der Pakete / nombre de colis

## RECEPTION DESK SYSTEMS / EMPFANGSTHEKEN-SYSTEME / CONFIGURATIONS DES BANQUES



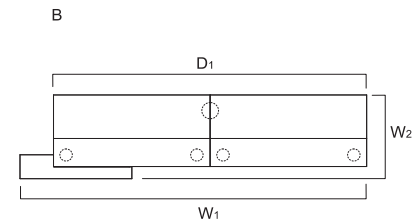
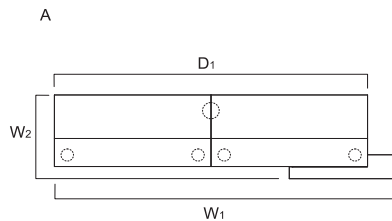
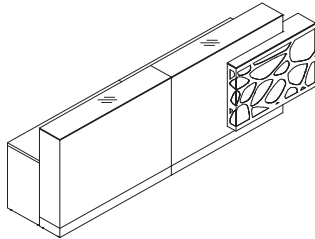
A: LOG10K+LOG14K+LOG11B+LOG01L  
B: LOG01P+LOG10K+LOG14K+LOG11B

INDEX SYMBOL		DIMENSIONS / ABMESSUNGEN [mm]					GBP				COMMENTS / BEMERKUNGEN / REMARQUES
A	B	W <sub>1</sub>	W <sub>2</sub>	D <sub>1</sub>	D <sub>2</sub>	H		kg	m <sup>3</sup>	pcs	
<b>LOG18LG</b>	<b>LOG18PG</b>	1700	1370	1140	600	1105	2 873,-	99.5	1.187	7	



A: LOG10K+NE41+LOG14K+LOG10B+LOG14B+LOG01L  
B: LOG01P+LOG14K+NE41+LOG10K+LOG14B+LOG10B

INDEX SYMBOL		DIMENSIONS / ABMESSUNGEN [mm]					GBP				COMMENTS / BEMERKUNGEN / REMARQUES
A	B	W <sub>1</sub>	W <sub>2</sub>	D <sub>1</sub>	D <sub>2</sub>	H		kg	m <sup>3</sup>	pcs	
<b>LOG19LG</b>	<b>LOG19PG</b>	2700	770	2400	-	1105	3 135,-	115.8	1.577	9	



A: 2xLOG14K+NE41+2xLOG14B+LOG01L  
B: LOG01P+2xLOG14K+NE41+2xLOG14B

INDEX SYMBOL		DIMENSIONS / ABMESSUNGEN [mm]					GBP				COMMENTS / BEMERKUNGEN / REMARQUES
A	B	W <sub>1</sub>	W <sub>2</sub>	D <sub>1</sub>	D <sub>2</sub>	H		kg	m <sup>3</sup>	pcs	
<b>LOG20LG</b>	<b>LOG20PG</b>	3100	770	2800	-	1105	3 449,-	120.8	1.809	9	

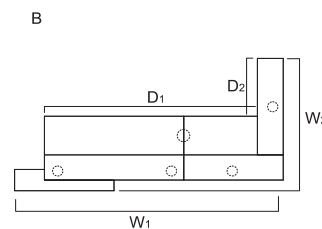
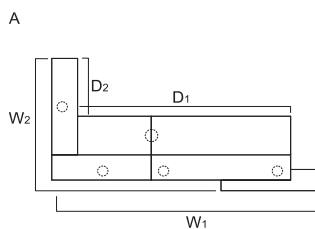
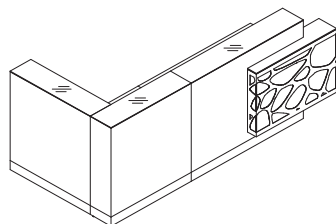
DESCRIPTION / LEGENDE / LÉGENDE:

net weight / Nettogewicht / poids net

volume / Volumen / le volume

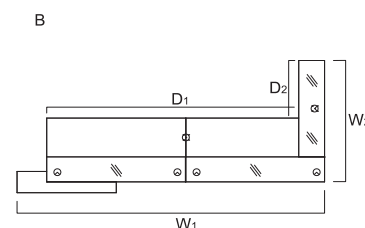
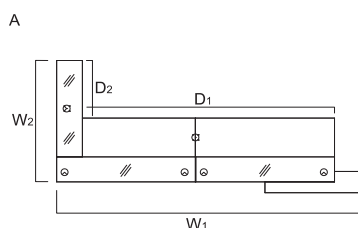
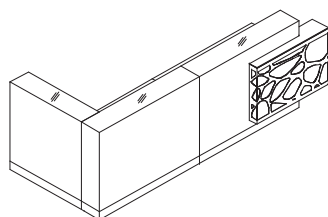
number of packages / Stückzahl der Pakete / nombre de colis

**RECEPTION DESK SYSTEMS / EMPFANGSTHEKEN-SYSTEME / CONFIGURATIONS DES BANQUES**



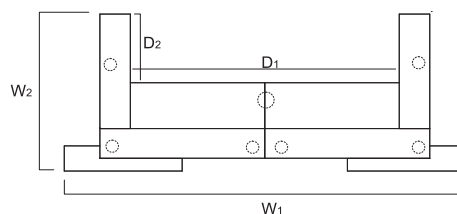
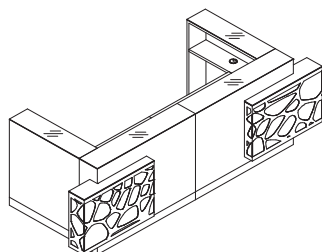
A: 2xLOG10K+LOG14K+LOG10B+LOG14B+NE41+LOG01L+LOG08B  
 B: LOG01P+LOG14K+NE41+LOG14B+LOG10B+2xLOG10K+LOG08B

INDEX SYMBOL		DIMENSIONS / ABMESSUNGEN [mm]					GBP	kg	m3	pcs	COMMENTS / BEMERKUNGEN / REMARQUES
A	B	W <sub>1</sub>	W <sub>2</sub>	D <sub>1</sub>	D <sub>2</sub>	H					
<b>LOG21LG</b>	<b>LOG21PG</b>	2700	1370	2140	600	1105	3 713,-	146.8	1.575	10	



A: LOG10K+2xLOG14K+LOG11B+LOG14B+NE41+LOG01L  
 B: LOG01P+2xLOG14K+NE41+LOG14B+LOG11B+LOG10K

INDEX SYMBOL		DIMENSIONS / ABMESSUNGEN [mm]					GBP	kg	m3	pcs	COMMENTS / BEMERKUNGEN / REMARQUES
A	B	W <sub>1</sub>	W <sub>2</sub>	D <sub>1</sub>	D <sub>2</sub>	H					
<b>LOG22LG</b>	<b>LOG22PG</b>	3100	1370	2540	600	1105	3 993,-	155.8	2.018	10	



2xLOG10K+2xLOG14K+2xLOG11B+NE41+LOG01L+LOG01P

INDEX SYMBOL	DIMENSIONS / ABMESSUNGEN [mm]					GBP	kg	m3	pcs	COMMENTS / BEMERKUNGEN / REMARQUES
	W <sub>1</sub>	W <sub>2</sub>	D <sub>1</sub>	D <sub>2</sub>	H					
<b>LOG23G</b>	3400	1370	2280	600	1105	5 770,-	200.3	2.390	15	

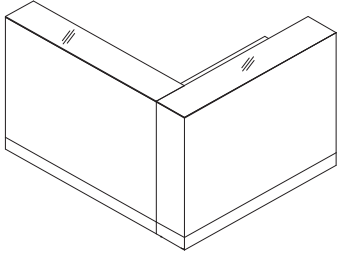
DESCRIPTION / LEGENDE / LÉGENDE:

net weight / Nettogewicht / poids net

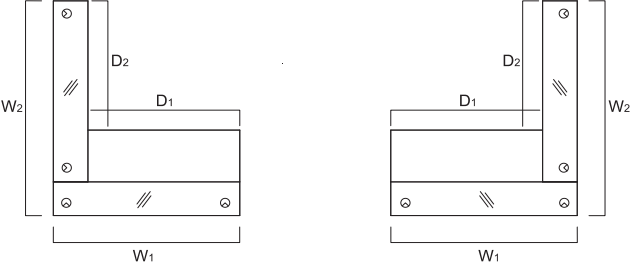
volume / Volumen / le volume




number of packages / Stückzahl der Pakete / nombre de colis

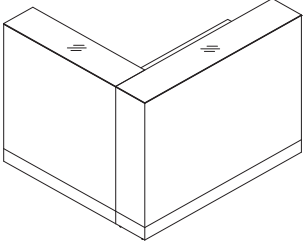
**RECEPTION DESK SYSTEMS / EMPFANGSTHEKEN-SYSTEME / CONFIGURATIONS DES BANQUES**



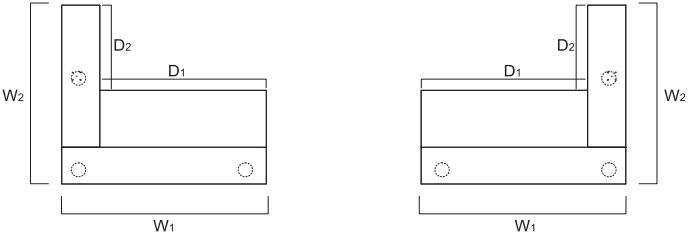
2xLOG14K+LOG11B






INDEX SYMBOL	DIMENSIONS / ABMESSUNGEN [mm]					GBP				COMMENTS / BEMERKUNGEN / REMARQUES
	W <sub>1</sub>	W <sub>2</sub>	D <sub>1</sub>	D <sub>2</sub>	H		kg	m <sup>3</sup>	pcs	
<b>LOG15</b>	1400	1660	-	-	1105	1 887,-	95.0	1.138	3	



LOG10K+LOG14K+LOG11B






INDEX SYMBOL	DIMENSIONS / ABMESSUNGEN [mm]					GBP				COMMENTS / BEMERKUNGEN / REMARQUES
	W <sub>1</sub>	W <sub>2</sub>	D <sub>1</sub>	D <sub>2</sub>	H		kg	m <sup>3</sup>	pcs	
<b>LOG17</b>	1400	1260	-	-	1105	1 641,-	90.0	1.024	3	

DESCRIPTION / LEGENDE / LÉGENDE:


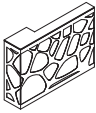
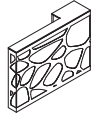
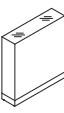
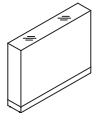
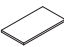
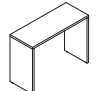
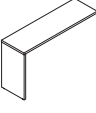
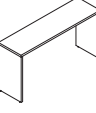

 net weight / Nettogewicht / poids net

 volume / Volumen / le volume


 number of packages / Stückzahl der Pakete / nombre de colis

PRODUCT ILLUSTRATION / PRODUKTANSICHT UND SKIZZE / VUE DE PRODUIT	DIMENSIONS / ABMESSUNGEN [mm]			INDEX SYMBOL	PRICE GBP					COMMENTS / BEMERKUNGEN / REMARQUES
	WIDTH / BREITE / LARGEUR	DEPTH / TIEFE / PROFONDEUR	HEIGHT / HÖHE / HAUTEUR			kg	m3	pcs		


**ELEMENTS / BAUTEILE / ÉLÉMENTS COMPOSANTS**

	700	770	740	<b>LOG07</b>	476,-	13.3	0.049	2		
	1000	220	710	<b>LOG01P</b>	1 233,-	9.5	0.163	4		right / - Recht / - droite
	1000	220	710	<b>LOG01L</b>	1 233,-	9.5	0.163	4		- left / - Links / - gauche
	1000	260	1105	<b>LOG10K</b>	578,-	35.0	0.286	1		
	1400	260	1105	<b>LOG14K</b>	825,-	40.0	0.400	1		
	740	400	28	<b>LOG08B</b>	204,-	11.0	0.008	1		
	1000	400	740	<b>LOG10B</b>	204,-	15.0	0.296	1		
	1140	400	740	<b>LOG11B</b>	238,-	15.0	0.337	1		
	1400	400	740	<b>LOG14B</b>	272,-	15.0	0.414	1		
	40	40	712	<b>NE41</b>	24,-	1.5	0.017	1		straight leg / Rundfuß / pied tube

DESCRIPTION / LEGENDE / LÉGENDE:

 net weight / Nettogewicht / poids net

 volume / Volumen / le volume

 number of packages / Stückzahl der Pakete / nombre de colis